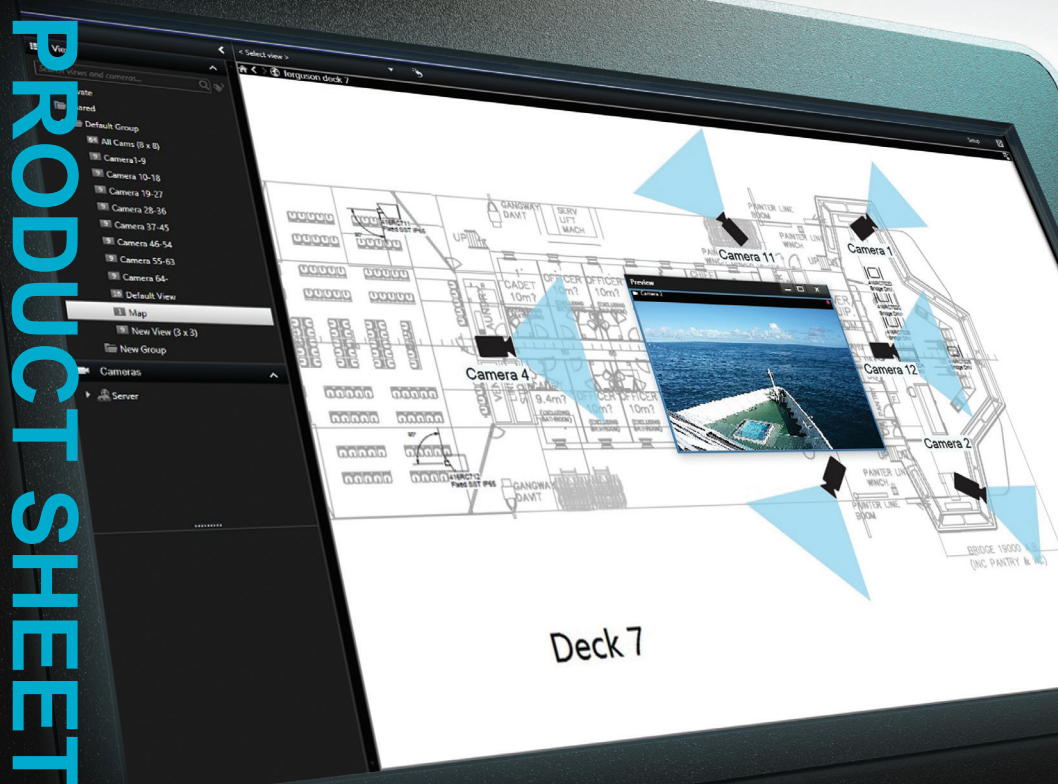




KONGSBERG

# PRODUCT SHEET



## KM MARINE CCTV

### DIGITAL IP VESSEL CCTV SYSTEM

The KM Marine CCTV System is a ruggedized digital marine CCTV system. The system is recommended for vessels requiring a rugged, commercial-off-the-shelf surveillance monitoring, control & recording, marine CCTV system, designed to meet the safety, security and reliability requirements for a wide variety of commercial vessels. The KM Marine CCTV System offers improved operational efficiency as well as an integrated working environment for safe and effective monitoring of critical vessel operations and the deployment and movement of ship personnel.

The system design allows for flexible configuration of operator stations together with a wide choice of camera viewing solutions with specific camera designs to suit all top-deck, below-deck and underwater monitoring applications. The system components can take full advantage of the latest IP Network and Power-over-Ethernet (PoE) cabling infrastructure to simplify installation requirements, increase flexibility and significantly reduce vessel installation costs. The system architecture allows for cost effective, scalable installations on vessels of all sizes, ranging from requirements for only a few cameras, up to larger vessel requirements for integrated systems with hundreds of cameras.

#### Benefits

- Powerful and flexible Video Management Software
- Integration with other Kongsberg Vessel Management solutions including K-Chief and K-IMS for remote land based transmission of data, control and diagnostics
- Simplified, cost-effective system installation using
- Power-over-Ethernet (PoE) technology
- ONVIF compliant software and cameras allowing endless integration possibilities, maximum system compatibility and flexibility
- Wide range of options allowing system to be easily customised
- Open Platform allowing custom solutions to be added for access control, video analytics and other future technologies
- High-Definition camera viewing solutions for every monitoring application and vessel location – topside, hazardous area, below-decks and subsea
- DNV GL Type Approved rugged marine grade system components, where required, for integrated Bridge vessel solutions
- Seamless integration with alarms, PIR detectors, fire detection systems
- Global sales and local customer support through Kongsberg offices worldwide.

# DIGITAL IP VESSEL CCTV SYSTEM

## System Configuration

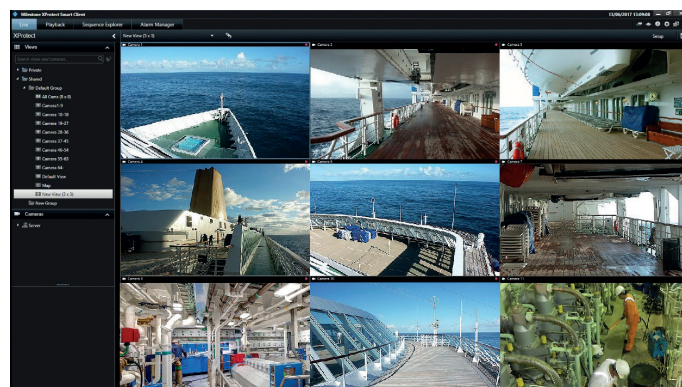
The KM Marine CCTV System architecture design allows for scalable custom installations on vessels of any size, with single, or multiple Operator Stations and multiple camera installations ranging from a few to several hundred in number. The Video Management Software (VMS) is installed on a scalable network server configuration, housed in an appropriate rack cabinet assembly together with the network switches and an optional UPS back-up in the event of main system power failure.



## Rugged Marine Cameras

The KM Marine CCTV System employs High-Definition camera viewing solutions for every monitoring application and vessel location – topside, hazardous area, below-decks and subsea.

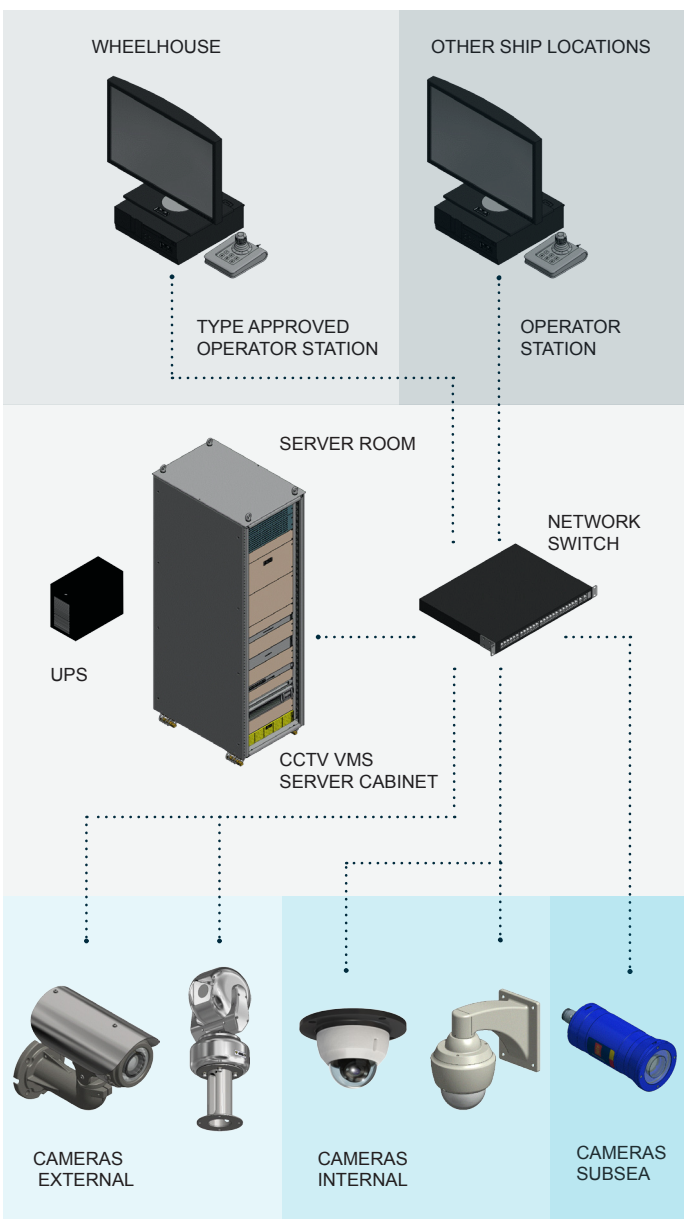
- 1920 x 1080p High Definition images at 30fps
- Topside 316L Stainless Steel; DNV GL Type Approved options
- Below Deck powder coated Aluminium
- Subsea Titanium options
- IR LED illuminators
- Night Vision Thermal Imaging options
- ATEX certified hazardous area options



## Video Management System – Functionality

The KM Marine CCTV System Video Management Software (VMS) functionality is accessed from one or more Operator Station PC's installed on the vessel and is pre-configured by KM to suit individual customer requirements prior to FAT. The VMS Smart Client provides the operators with seamless access to both recorded and live video streams from any of the installed cameras, together with instant camera control. The system can be configured with advanced functions to integrate with, and respond to incident alarms, and to operate from a custom designed 'Smart Ship Map' to simplify camera selection and monitoring.

- Instant access to live and recorded video streams
- Customisable camera views
- Advanced multi-screen handling
- Virtual joystick control with overlay buttons
- Factory configurable Interactive 'Smart Ship Map' functionality



Specifications subject to change without any further notice.

KONGSBERG MARITIME

Switchboard: +44 1224 226 500

Global support 24/7: +47 33 03 24 07

E-mail sales: km.sales.camera.uk@km.kongsberg.com

E-mail support: km.support@kongsberg.com

km.kongsberg.com



KONGSBERG