

MARINE

CCTV

RANGE

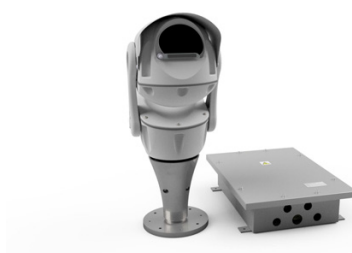


Marine

Naval  
Submarine



Naval Ship



Oil & Gas



Special  
Application





## NAVAL RANGE

### Rugged Fixed Camera



- High Definition, Day/ Night, IR illuminators
- Power over Ethernet
- Anodised aluminium c/w FED-STD paint
- US Mil Spec Design
- Part No. 0482-6010HD-020

### External Compact Naval PTZ Camera



- Remotely controllable Pan, Tilt & Zoom camera with wiper
- High Definition
- Day/Night
- Stainless steel 316
- US Mil Spec Design:
- IR illuminator option
- Part No. 0527-6010-001

## SUBMARINE SURVEILLANCE SYSTEMS

### External Marine Fixed Mil version



- High Definition, Day/ Night, IR illuminators
- PoE Plus
- Stainless steel 316
- Heater demister
- Mil Spec EMI
- Part No. 0482-6030-MIL

### Rugged Thermal Camera



- High resolution LWIR
- Power over Ethernet
- Designed to U.S Mil Specification
- Marine option
- Part No. 0482-6013-720

### Cameras & Lamps



- Ultra Low Light mono subsea cameras
- HD/SD colour subsea cameras
- Subsea LED lamps
- Proven for shock/EMI
- Inboard CCTV systems
- Contact UK office for further details

### HOSS Camera



#### Helicopter Observation Surveillance System

- Ultra Low light and HD options
- Stainless steel 316
- US Mil Spec design
- IP option
- Part No. 0465-6002

### ALLSS Range



#### Amphibious Low Light Surveillance System

- Ultra Low light
- Fixed & PTZ options
- U.S Mil Spec design
- IP option
- Part No. 0465 Range
- Contact Office

### On Board Monitoring



- Video Management Software solutions
- Bespoke control/viewing
- Solid State Digital recording
- Video IP streaming
- Contact UK office for further details





## MARINE RANGE

External Marine Fixed Camera



- High Definition, Day/Night, IR Illuminator
- DNV GL Type Approved
- Power over Ethernet
- Remote varifocal lens
- Stainless steel 316
- Part No. 0482-6030-0001

External Compact Marine PTZ Camera



- Remotely controllable Pan, Tilt & Zoom camera with wiper
- High Definition
- Day/Night
- S/S 316 or aluminium
- IR LED, Thermal Imager Options
- Wash System Option
- Part No. IM Range -See datasheet

## EXPLOSION PROOF RANGE

External Marine Fixed 360° Camera



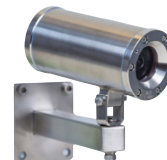
- 5MP/12MP Option
- Power over Ethernet
- Stainless steel 316 or aluminium option
- 360° imaging technology
- Part No. 0482-6050

External Marine 180° Panoramic Camera



- 3MP
- Power over Ethernet
- Stainless steel 316 or aluminium option
- 180° panoramic view
- Part No. 0482-6060

Ex Proof Marine Fixed Camera



- High Definition, IR illuminators
- Remote varifocal lens
- ATEX, IECEx
- PoE/PoE+ options
- Stainless steel 316
- Part No. 0482-6080 Internal/0482-6082 External option

Internal Fixed Dome Camera



- High Definition, Day/Night, IR Illuminator
- Power over Ethernet
- Commercial & Naval options
- Part No. 0482-6070

Internal PTZ Dome Camera



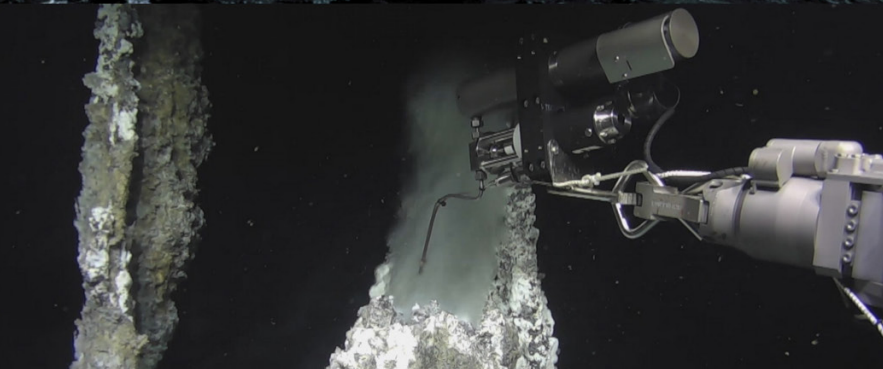
- Remotely controllable High Definition Pan, Tilt & Zoom dome camera
- Day/Night
- Ultra PoE or 24V
- Part No. 0482-6025

Ex Proof Marine PTZ Camera



- Pan, Tilt & Zoom and Fixed options
- High Definition
- ATEX, IECEx & EAC-Ex Certification
- DNV Type Approved
- Stainless Steel 316
- Wiper/Wash options
- Part No. IM Range -See datasheet





## ANCILLARIES

### Wash System for External Cameras



- DNV Type Approved
- Stainless Steel 316
- 10 Litre reservoir
- Ex Certified option

### Alarm InterFace Unit



- To interface multiple alarm inputs/outputs
- Software config for VMS

## SUBSEA CAMERAS

### IP Subsea Solutions



- Full IP Range
- PoE Options
- Hull mount on vessels
- Compatible with Imenco Topside CCTV
- Offshore, Renewable & Aquaculture Applications

### Full Subsea Camera and Lamp Range



- Cameras/lights for ROV Inspection & Navigation Tasks
- Pan & Tilt units
- HD/SD/lowlight
- Halogen & LED
- Full Ocean depth Solutions

## SPECIAL APPLICATIONS

### Rugged Mining Camera



- Mining Solution
- HD & GigE options
- Low light option
- High shock
- High vibration resistance
- Heated Sapphire port
- Part No. 0414-6002

### Overhead Line Equipment System



- High resolution (8MP) Stills
- IP68
- Automated wire measurement with 0.1mm accuracy
- Operates with live high voltage wires
- Up to 5hr charge & 100m wireless range

**MARINE** **CCTV** **RANGE**  
BY IMENCO





## CONTROL, RECORDING & MONITORING EQUIPMENT

### Operator Station PC Type Approved or Standard



- Type Approved option IEC60945 for Bridge use
- Rack or desk mounting options
- Multi monitor viewing options
- Pre-configured VMS

### Monitor Type Approved or Standard



- Type Approved option IEC60945 for Bridge use
- Console, Wall or Desk/ Ceiling mount
- 16:9, 22" & 24"
- Touchscreen option

### Network Switch



- Power over Ethernet Plus
- Ultra PoE Option
- Rack Mountable
- 16 & 24 Way

### Video Management Software (VMS)



- Instant access to live and recorded video
- Customisable camera views
- Interactive Smart Ship Map Function

### PTZ Joystick Type Approved or Standard



- Allows intuitive remote control of Pan, Tilt & Zoom (PTZ) cameras
- Panel or desk mount
- Type Approved option IEC60945 for Bridge use

### UPS



- 19" Rack Mount
- Up to 1500VA Power Capacity

### Central Rack



- Rugged 19" rack cabinet
- 24U or 42U
- Shock Mount option - Wire Rope Isolators
- Network switch and UPS options

### Server (NVR)



- Pre-configured VMS
- High performance RAID storage with in-built redundancy
- Up to 31 days recording to suit system

**imenco**  
SMART SOLUTIONS

## About Imenco

Imenco design, develop and manufacture topside camera systems as well as subsea cameras, lights & lasers. More than forty years of experience gives our customers added value and Smart Solutions.

Imenco provides digital marine IP CCTV equipment to meet the harshest of environments. Our equipment is recommended for vessels requiring a rugged, commercial-off-the-shelf surveillance monitoring, control & recording, marine CCTV system, designed to meet the safety, security and reliability requirements for a wide variety of commercial, coastguard and naval vessels.

In addition, Imenco design, develop and manufacture acoustic communications & positioning systems, condition monitoring, helicopter fuel systems, subsea electronics and subsea mechanical equipment including corrosion, guidewire, lifting and handling products.

Imenco is approved by Achilles and DNV, and our integrated management system is certified according to ISO 9001: 2015.

*Our advanced technology is supported by an experienced project management team and Imenco's global network of offices in key maritime locations, ensuring smooth delivery, installation and on-going support for customers.*

## Contact

### **UK Office - CCTV Marine & Naval Projects Group**

Imenco UK Ltd  
Campus 1, Aberdeen Innovation Park,  
Balgownie Road, Bridge of Don  
AB22 8GT, Aberdeen, UK  
T: +44 1224 226 500  
Email: [systems.uk@imenco.com](mailto:systems.uk@imenco.com)

### **Norway - Head Office Grinde**

Kophaug 3,  
5570 Aksdal, Norway  
T: +47 52 86 41 00  
Email: [imenco@imenco.com](mailto:imenco@imenco.com)

### **US Office**

Imenco, LLC  
212 Jared Dr.  
Broussard, LA 70518  
CAGE Code: 8B4E5  
T: +1 985 518 2645  
Email: [US@imenco.com](mailto:US@imenco.com)

### **Singapore Office**

66 Tannery Lane #01-03L, Sindo Building  
347805, Singapore  
T: +65 9382 8667  
Email: [Canet.Cher@imenco.com](mailto:Canet.Cher@imenco.com)

### **Agents**

In addition, to our regional Imenco offices we have a worldwide network of approved agents who can provide you with both local sales and project support. Please contact us and we can advise of your local Imenco Representative.